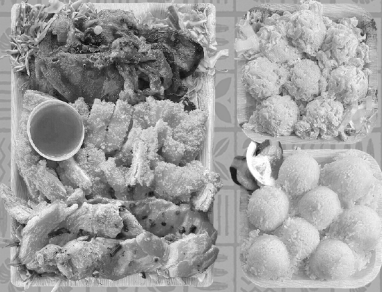


OHANA MEAL \$67.89

A hearty family tray of BBQ Beef, Chicken Katsu & BBQ Chicken with Macaroni Salad & White Steamed Rice. Includes Katsu Sauce. Feeds 6 - 8 people.



DRINKS

- Pepsi 24oz 2.29
- Bottled Water 1.99
- Hawaiian Sun 3.29
- Topo Chico 2.99
- Bottled Drinks 2.89



DESSERT

- Butter Mochi 3.29
- Malasadas (5pcs.) 2.99

2,000 calories a day is used for generational nutritional advice, but calorie needs vary. Additional information is available upon request. Specials change periodically. Please ask us for availability.

*Consuming raw or undercooked meats, poultry, seafood, shellfish, or eggs may increase your risk of food-borne illness.

REVISED 02-2024. PRICES ARE SUBJECT TO CHANGE WITHOUT NOTICE

MOBILE ORDERING

- Order ahead
- Redeem points for free stuff
- Skip the lines
- Scan the QR code
- Earn points



TAG US

- @llhawaiianbbqsa
- @llhawaiianbbqnb
- @llhawaiianbbqlackland
- @llhawaiianbbqaustin
- @llhawaiianbbqkilleen
- @llhawaiianbbq_uc

We'll share your post on our social media!

LOCATIONS

SAN ANTONIO

1302 Austin Highway #1
San Antonio, TX 78209
210 - 474 - 6699

AUSTIN

3601 W William Cannon Dr
Bldg 4 #300 Austin, TX
512 - 992 - 0404

NEW BRAUNFELS

156 TX- 46 #200
New Braunfels, TX 78130
830 - 312 - 5025

LACKLAND

6934 W Military Dr
San Antonio, TX 78227
210 - 257 - 8577

KILLEEN

1200 Lowes Blvd #106
Killeen, TX 76542
254 - 415 - 7076

UNIVERSAL CITY

1645 Pat Booker Rd
Universal City, TX 78148
210 - 236 - 8431



THE ORIGINAL HAWAIIAN BARBECUE

Dine-In • Catering • Take Out



KATSU CHICKEN



BBQ MIX



GARLIC SHRIMP

BOWLS

Served w/ rice, vegetables & choice of Katsu, BBQ Chicken, BBQ Beef.



BBQ Chicken	460 cal	9.39
Fried Katsu Chicken	630 cal	9.49
BBQ Beef	390 cal	9.59
Pulled Kalua Pork w/ Cabbage	430 cal	9.99

Loco Moco 630-660 cal **9.79**

Served w/ rice, choice of protein (beef patty, SPAM, Katsu, Kalua pork), gravy, & a fresh fried egg. No vegetables.



MUSUBI

SPAM	280 cal	3.69
BBQ Chicken	250 cal	3.69
Fried Katsu Chicken	320 cal	3.69
BBQ Beef	220 cal	3.79

SAIMIN (RAMEN)

Fresh noodles served in special hot broth topped w/ fish cake & green onion.



Plain Ramen	290 cal	6.19
SPAM Ramen	490 cal	6.59
BBQ Chicken Ramen	550 cal	6.69
Fried Katsu Chicken Ramen	660 cal	6.69
BBQ Beef Ramen	480 cal	6.79
Breaded Fried Shrimp Ramen	620 cal	6.99

PLATES INCLUDE
WHITE RICE & MACARONI SALAD

HAWAII'S FAVORITE PLATES

BBQ Mix	450 cal	16.59
BBQ Beef, BBQ Chicken, BBQ Short Ribs.		
Seafood & BBQ Combo	720-860 cal	16.39
Breaded Fried Fish & Breaded Fried Shrimp w/ choice of BBQ Beef, BBQ Chicken, or BBQ Short Ribs.		
Seafood Mix	580 cal	16.39
Breaded Fried Fish & Breaded Fried Shrimp.		
BBQ Kalbi Beef Short Ribs	480 cal	16.59
Pulled Kalua Pork & Cabbage	600 cal	14.29

SEAFOOD PLATES

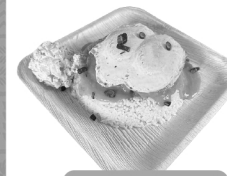
Breaded Fried Fish	750 cal	14.49
Breaded Fried Shrimp	670 cal	14.49
Garlic Shrimp	220 cal	14.59
Mahi Garlic Fish	430 cal	14.59

CHICKEN PLATES

BBQ Chicken	360 cal	14.19
Fried Katsu Chicken	690 cal	14.29
Breaded & deep-fried boneless chicken.		
Lava Chicken 🍗	620 cal	14.29

BEEF PLATES

Hamburger Steak w/ Gravy	610 cal	14.99
BBQ Beef	220 cal	13.59
Loco Moco (no sides)	790 cal	14.19



LOCO MOCO



KALUA PORK



LAVA CHICKEN

BURGERS

Hamburger	430 cal	6.19
Cheeseburger	500 cal	6.29
BBQ Chicken Burger	350 cal	6.69
Fried Katsu Chicken Burger	490 cal	6.69
BBQ Beef Burger	290 cal	6.79
Breaded Fried Fish Burger	460 cal	6.99

SPECIALTIES



Breakfast Bowl 930-1080 cal **8.99**
Served w/ rice, 2 fresh eggs, & SPAM.



Lumpia 130 cal **6.99**
5 pieces of lumpia w/ sauce.

KEIKI (KIDS) MENU

With your choice of rice, french fries, or macaroni salad.

BBQ Chicken	330-410 cal	7.29
Fried Katsu Chicken	500-580 cal	7.39
BBQ Beef	260-340 cal	7.49

